

# FALL 2018 HONEOYE AREA YARD WASTE COLLECTION



## SITE RULES

1. ALL YARD WASTE MUST BE DISPOSED OF LOOSELY. NO BAGS ALLOWED
2. LAWN CLIPPINGS AND LEAVES MUST BE SEPARATE FROM WOOD DEBRIS
3. NO CONSTRUCTION DEBRIS OR NON-ORGANIC ITEMS

## WOOD DEBRIS RULES

1. 12 INCH TO 16 INCH DIAMETER PIECES MUST BE NO MORE THAN 8 FEET IN LENGTH
2. 17 INCH TO 23 INCH DIAMETER PIECES MUST BE NO MORE THAN 18 INCHES IN LENGTH
3. ANYTHING OVER 24 INCHES IN DIAMETER WILL NOT BE ACCEPTED

**Help Honeoye Lake! Keep yard waste out of ditches, streams, and the lake. Yard waste going into Honeoye Lake adds nutrients, feeding weeds and algae.**

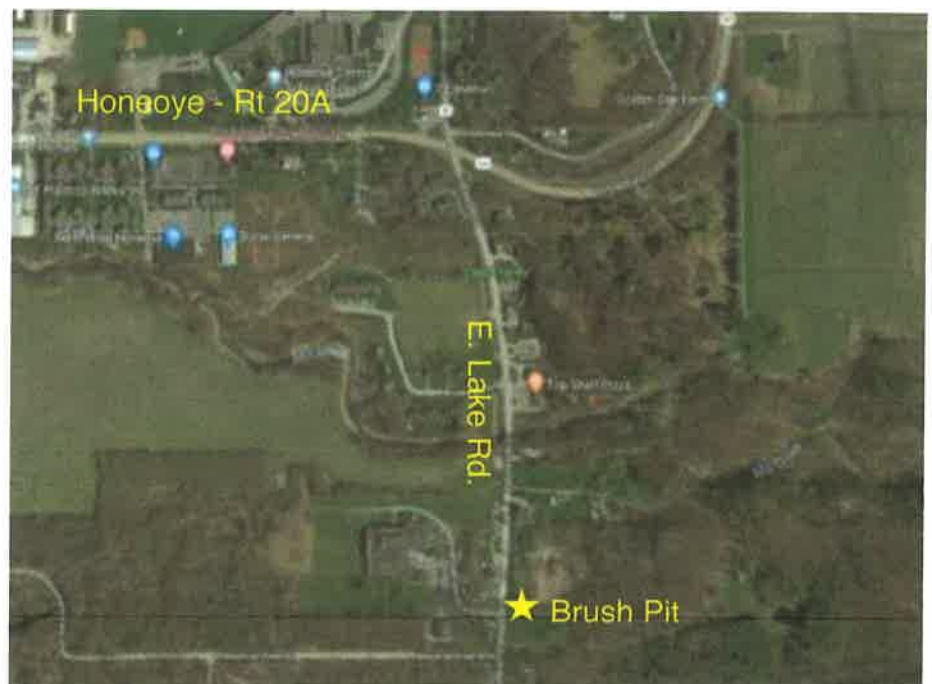
### Bring your yard waste to:

Richmond Municipal Brush Pit  
4947 East Lake Rd., Richmond

Wednesdays 4pm to 7pm & Saturdays 8am to 4pm

Available to Richmond and Canadice Residents Only.

Yard waste includes leaves, grass clippings, garden debris, small tree branches, limbs and similar materials such as aquatic weeds, per NYS Conservation Law Part 360-1.2(b)



Sponsored by the Towns of  
Richmond and Canadice, Honeoye  
Valley Association & Honeoye  
Lake Watershed Task Force